

B AC Motors

Reversible Motor 180W(□ 90mm)

180W Reversible Motor 180W(□ 90mm)

Motor 사양

Model		Output W	Voltage V	Frequency Hz	Poles	Duty	Starting Torque		Rated Load				Capacitor μF / VAC
9RDG*-180F(-T): Gear Type Shaft 9RDD*-180F(-T): D-Cut Type Shaft 9RDK*-180F(-T): Key Type Shaft	kgfcm						N.m	Speed r/min	Current A	Torque kgfcm N.m			
Lead Wire Type	Terminal Box Type												
9RDG1(A)-180F□	9RDG1(A)-180F□-T	180	1φ 110	60	4	30min.	7.40	0.740	1600	3.00	10.96	1.096	30.0 / 250
9RDG2(D)-180F□	9RDG2(D)-180F□-T	180	1φ 220	60	4	30min.	7.40	0.740	1600	1.50	10.96	1.096	8.0 / 450
9RDGE-180F□	9RDGE-180F□-T	180	1φ 220	50	4	30min.	7.00	0.700	1250	1.50	14.03	1.403	8.0 / 450
			1φ 240				7.80	0.780	1300	1.60	13.49	1.349	

- 1) 모터 모델명 * 자리에는 전압코드가, □ 안에는 부착되는 감속기의 모델 타입명이 들어갑니다.
- 2) 전압코드 A, D, E는 TP(Thermal Protector) 부착 사양입니다.
- 3) Gear Type Shaft는 감속기 부착용이며 D-Cut 및 Key Type Shaft는 모터 단독 사용시의 출력축입니다.

감속기 부착 시 최대허용토크

60Hz

Motor Model	Gearbox Model	감속비	3	3.6	5	6	7.5	9	10	12.5	15	18	20	25	30	36	40	50	60	75	90	100	120	150	180	200	
9RDG*-180FH	9HBK□BH 9HFK□BH	kgfcm	26.6	32.0	44.4	53.3	66.6	79.9	88.8	100.0	120.0	144.0	160.0	180.8	217.0	260.4	289.3	300.0	300.0	300.0	300.0	300.0	300.0	300.0	300.0	300.0	300.0
		N.m	2.61	3.13	4.35	5.22	6.52	7.83	8.70	9.80	11.76	14.11	15.68	17.72	21.26	25.51	28.35	29.40	29.40	29.40	29.40	29.40	29.40	29.40	29.40	29.40	29.40

Motor Model	Gearbox Model	감속비	5	7.5	10	15	20	25	30	40	50	60	80	100
9RDG*-180FWH	9WHD□-030	r/min	360	240	180	120	90	72	60	45	36	30	22	18
		N.m	38.1	55.2	71.0	99.9	126.2	144.6	168.3	183.7	173.5	163.3	132.7	-
	9WHD□-040	kgfcm	-	-	-	-	-	-	-	-	267.4	299.8	295.0	270.0
		N.m	-	-	-	-	-	-	-	-	26.20	29.38	28.91	26.46

50Hz

Motor Model	Gearbox Model	감속비	3	3.6	5	6	7.5	9	10	12.5	15	18	20	25	30	36	40	50	60	75	90	100	120	150	180	200	
9RDG*-180FH	9HBK□BH 9HFK□BH	kgfcm	32.8	39.3	54.6	65.5	81.9	98.3	109.2	123.1	147.7	177.2	196.9	222.5	267.0	300.0	300.0	300.0	300.0	300.0	300.0	300.0	300.0	300.0	300.0	300.0	300.0
		N.m	3.21	3.85	5.35	6.42	8.03	9.63	10.71	12.06	14.47	17.37	19.30	21.81	26.17	29.40	29.40	29.40	29.40	29.40	29.40	29.40	29.40	29.40	29.40	29.40	29.40

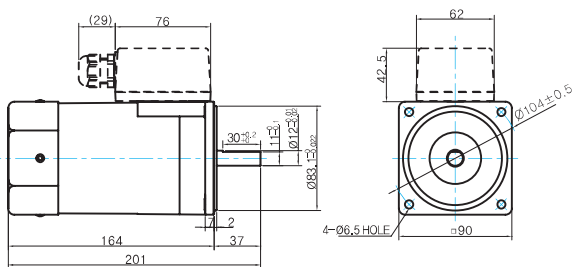
Motor Model	Gearbox Model	감속비	5	7.5	10	15	20	25	30	40	50	60	80	100
9RDG*-180FWH	9WHD□-030	r/min	300	200	150	100	75	60	50	38	30	25	18	15
		kgfcm	46.9	68.0	87.4	123.0	155.4	178.0	204.1	183.7	173.5	163.3	132.7	-
	9WHD□-040	N.m	4.60	6.66	8.56	12.05	15.23	17.45	20.00	18.00	17.00	16.00	13.00	-
		kgfcm	-	-	-	-	-	-	-	-	329.1	330.0	295.0	270.0

- 1) 모터 모델명 * 자리에는 전압코드가 들어갑니다.
- 2) 감속기 모델명 □ 안에는 감속비가 들어갑니다.
- 3) 위의 표에서 색칠된 범위의 감속비를 선택했을 때 감속기의 출력축은 모터의 출력축과 같은 방향으로 회전합니다. 흰색 바탕 범위의 감속비에서는 감속기 출력축은 모터 출력축의 회전방향과 반대방향으로 회전합니다.
- 4) 회전속도(r/min)는 모터의 동기회전속도(50Hz:1500r/min, 60Hz:1800r/min)를 감속비로 나누어 계산합니다. 실제 회전속도는 부하의 크기에 따라 표시보다 2~20% 정도 느립니다.

Dimensions

MOTOR ONLY

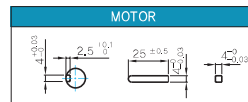
- MOTOR MODEL:
9RDD□-180F(-T) (GENERAL FAN)



MOTOR OUTPUT SHAFT

MODEL	SPEC
D-CUT TYPE	37 30 ^{+0.02} 0.12 ^{+0.01}
9RDD□-180F	
KEY TYPE	37 25 ^{+0.02} 0.12 ^{+0.01}
9RDK□-180F	

KEY SPEC



GEARED MOTOR

H TYPE GEARBOX

- MOTOR MODEL:
9RDG□-180FH (GENERAL FAN)

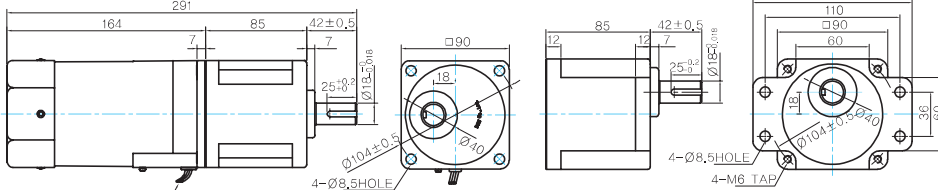
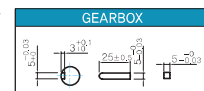
- GEARBOX MODEL:
9HBK□BH

- GEARBOX MODEL:
9HFK□BH

GEARBOX OUTPUT SHAFT

MODEL	SPEC
KEY TYPE	22 25 ^{+0.02} 0.12 ^{+0.01}
9HBK□BH	
9HFK□BH	

KEY SPEC



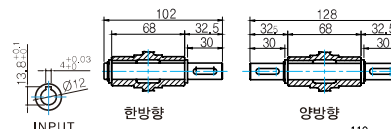
LEAD WIRE 300mm
UL STYLE NO.3271 AWG NO.20

WH TYPE GEARBOX

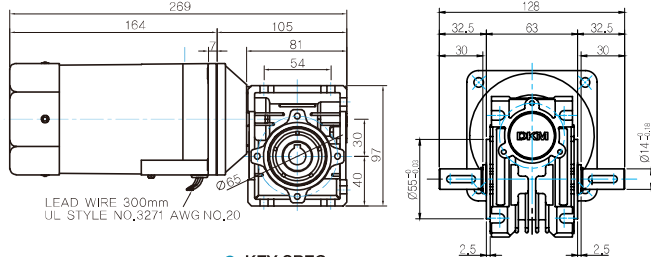
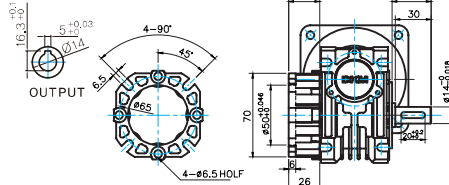
- MOTOR MODEL:
9RDG□-180FWH (GENERAL FAN)

- GEARBOX MODEL:
9WHD□-030

SHAFT

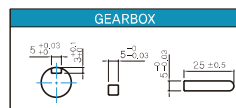


FLANGE



LEAD WIRE 300mm
UL STYLE NO.3271 AWG NO.20

KEY SPEC

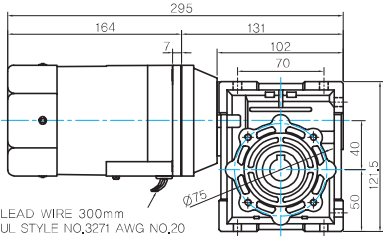


* 출력 FLANGE와 SHAFT는 별매입니다.

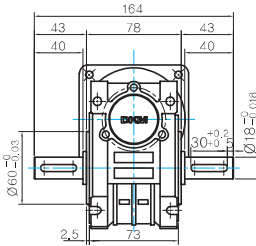
B AC Motors

Reversible Motor 180W (□ 90mm)

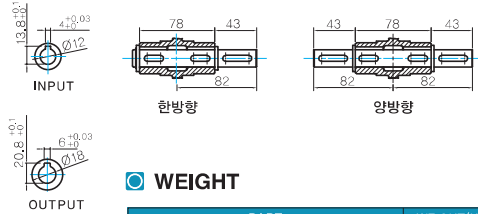
● MOTOR MODEL:
9RDG□-180FWH (GENERAL FAN)



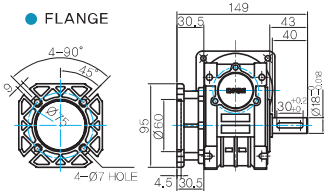
● GEARBOX MODEL:
9WHD□-040



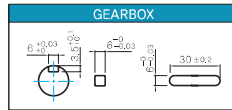
● SHAFT



● FLANGE



● KEY SPEC



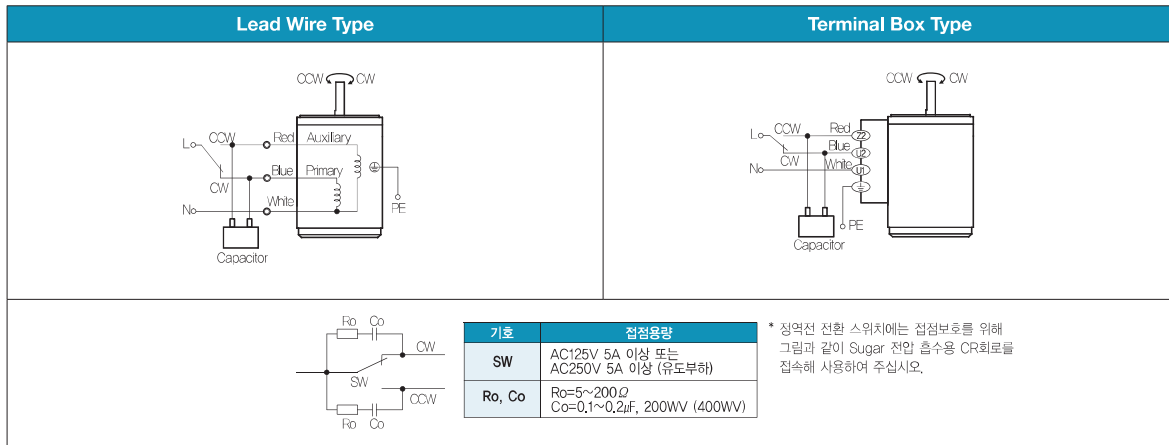
● WEIGHT

PART		WEIGHT(Kg)
MOTOR		3.05
GEAR BOX	9HB(F)K3BH ~ 9HB(F)K10BH	1.62
	9HB(F)K12.5BH ~ 9HB(F)K20BH	1.68
	9HB(F)K25BH ~ 9HB(F)K60BH	1.73
	9HB(F)K75BH ~ 9HB(F)K200BH	1.78
	9WHD□-030	1.2
9WHD□-040	2.1	
9XD10□□	0.6	

* 출력 FLANGE와 SHAFT는 별매입니다.

Motor Images

9RDD□-180F	9RDD□-180F-T	9RDG□-180FP+9PBK□BH	9RDG□-180FP+9PFK□BH
9RDG□-180FH+9HBK□BH	9RDG□-180FH+9HFK□BH	9RDG□-180FW+9WD□BL	9RDG□-180FWH+9WHD□

결선도


- 1) 회전방향은 모터 축 측에서 본 방향을 나타냅니다.
- 2) CW는 시계방향, CCW는 반시계방향입니다.
- 3) 모터 운전중에 회전방향 전환이 가능합니다. 스위치를 CW 쪽으로 하면 모터는 시계방향으로, CCW 쪽으로 하면 반시계방향으로 회전합니다.